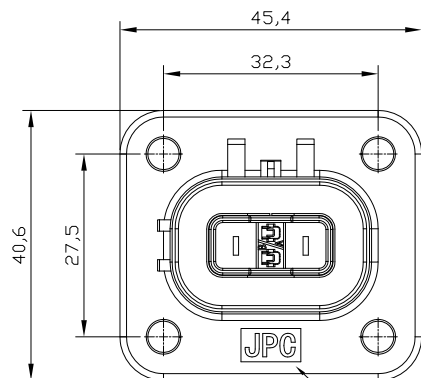


THIS DRAWING AND THE DATA DISCLOSED HEREIN OR HEREWITH IS NOT TO BE REPRODUCED USED OR
DISCLOSED IN WHOLE OR IN PART TO ANYONE WITHOUT THE PERMISSION OF JESS—LINK PRODUCTS CO.,LTD.(JPC)

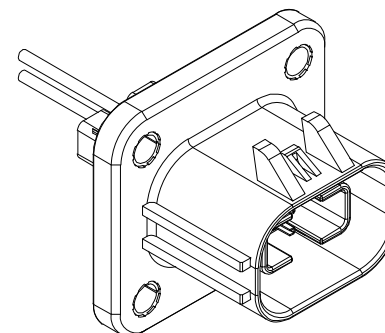
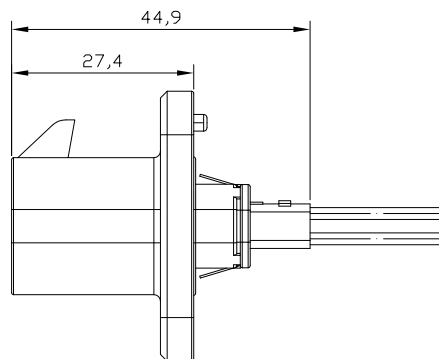
CUSTOMER DRAWING

DRWC-003168

REV.	ECN NO.	DESCRIPTION	MDF'D	APP'D	DATE
01	---	INITIAL DESIGN	Chunxia	Richard	05/15/2022

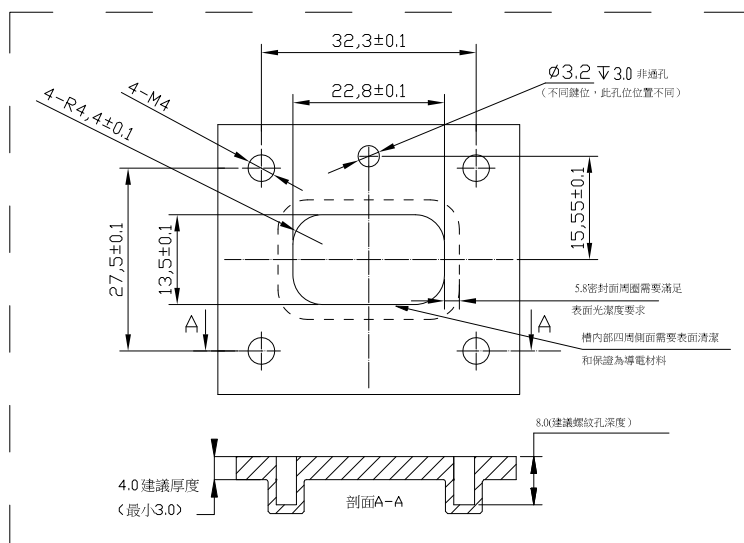
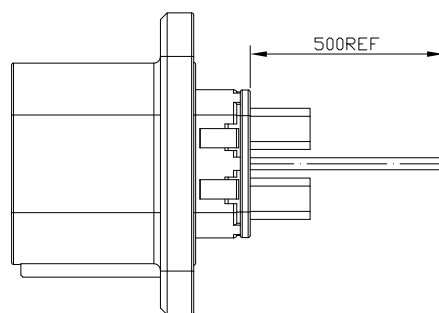


Logo印字為：JPC



規格參數:

- 1.工作溫度Operating temperature: $-40^{\circ}\text{C} \sim 125^{\circ}\text{C}$.
- 2.額定電流Current rating: 23A(Max).
- 3.額定電壓Operating voltage: 600VAC.
- 4.耐電壓Dielectric withstanding voltage: 3000VAC.
- 5.防護等級Protection class: IP67(mated).
- 6.機械壽命Mating cycle: 100Min.
- 7.鎖扣類型Latching style: Two stage, finger actuated.
- 8.帶高壓互鎖Electrical interlock(HVIL可選擇)
- 9.屏蔽Shielding: 360° From wire to device(互配).
- 10.配對插頭Mating plug: PD8MA01X02W0-0.



開孔尺寸(不同鍵位見鍵位對照圖)

訂購信息 Ordering Informating


JPCXLP082	A	—	61	—	2.5
鍵位 "A" "B" "C" "D" "E" "F"	高壓互鎖 0:不帶互鎖 1:帶互鎖	線纜大小 "2.5"=2.5mm ²			

Standard part List(HVIL)

Model NO.	JPC NO.	Accepted Wire Size
JPCXLP082A-61-2.5	PD8FA11X02W0-0	2.5mm ² 非屏蔽 Ø3.1m~3.5m
JPCXLP082B-61-2.5	PD8FB11X02W0-0	
JPCXLP082C-61-2.5	PD8FC11X02W0-0	
JPCXLP082D-61-2.5	PD8FD11X02W0-0	
JPCXLP082E-61-2.5	PD8FE11X02W0-0	
JPCXLP082F-61-2.5	PD8FF11X02W0-0	

Standard part List(Without HVIL)

Model NO.	JPC NO.	Accepted Wire Size
JPCXLP082A-60-2.5	PD8FA01X02W0-0	2.5mm ² 非屏蔽 Ø3.1m~3.5m
JPCXLP082B-60-2.5	PD8FB01X02W0-0	
JPCXLP082C-60-2.5	PD8FC01X02W0-0	
JPCXLP082D-60-2.5	PD8FD01X02W0-0	
JPCXLP082E-60-2.5	PD8FE01X02W0-0	
JPCXLP082F-60-2.5	PD8FF01X02W0-0	

RoHS COMPLIANT	HALOGEN FREE	Unit : mm	PROJECTION 		JPC connectivity			
		GENERAL TOLERANCES: (UNLESS SPECIFIED) 0 = ±.50 0.0 = ±.25 0.00 = ±.15 0.000 = ±.05 0" = ±.2" 0.0" = ±.1"	D.R.	05/15/2022 Chunxia	TITLE JPCXLP602插座			PD./FILE NO. ---
			CH.K	05/15/2022 Andrew				
			APV.D	05/15/2022 Richard	SCALE 1:1	SIZE A4	PART NO. PD8FA11X02W0-0	REV. 01 SHEET 1 OF 2

1	2	3	4	5	6	7	8				
THIS DRAWING AND THE DATA DISCLOSED HEREIN OR HERewith IS NOT TO BE REPRODUCED USED OR DISCLOSED IN WHOLE OR IN PART TO ANYONE WITHOUT THE PERMISSION OF JESS-LINK PRODUCTS CO.,LTD.(JPC)				CUSTOMER DRAWING DRWC-003168		REV. ECN NO. DESCRIPTION MDF'D APP'D DATE 01 --- INITIAL DESIGN Chunxia Richard 05/15/2022					
鍵位對照圖											
A 鍵位		B 鍵位		C 鍵位		D 鍵位		E 鍵位		F 鍵位	
RoHS COMPLIANT		HALOGEN FREE		Unit : mm		PROJECTION 		JPC connectivity			
				GENERAL TOLERANCES: (UNLESS SPECIFIED) 0 = ±.50 0.0 = ±.25 0.00 = ±.15 0.000 = ±.05 0° = ± 2° 0.0° = ± 1°		D.R. 05/15/2022 Chunxia		TITLE JPCXLP602插座		PD./FILE NO. ---	
				CH.K 05/15/2022 Andrew		APV.D 05/15/2022 Richard		SCALE 1:1		SIZE A4	
1	2	3	4	5	6	7	8				